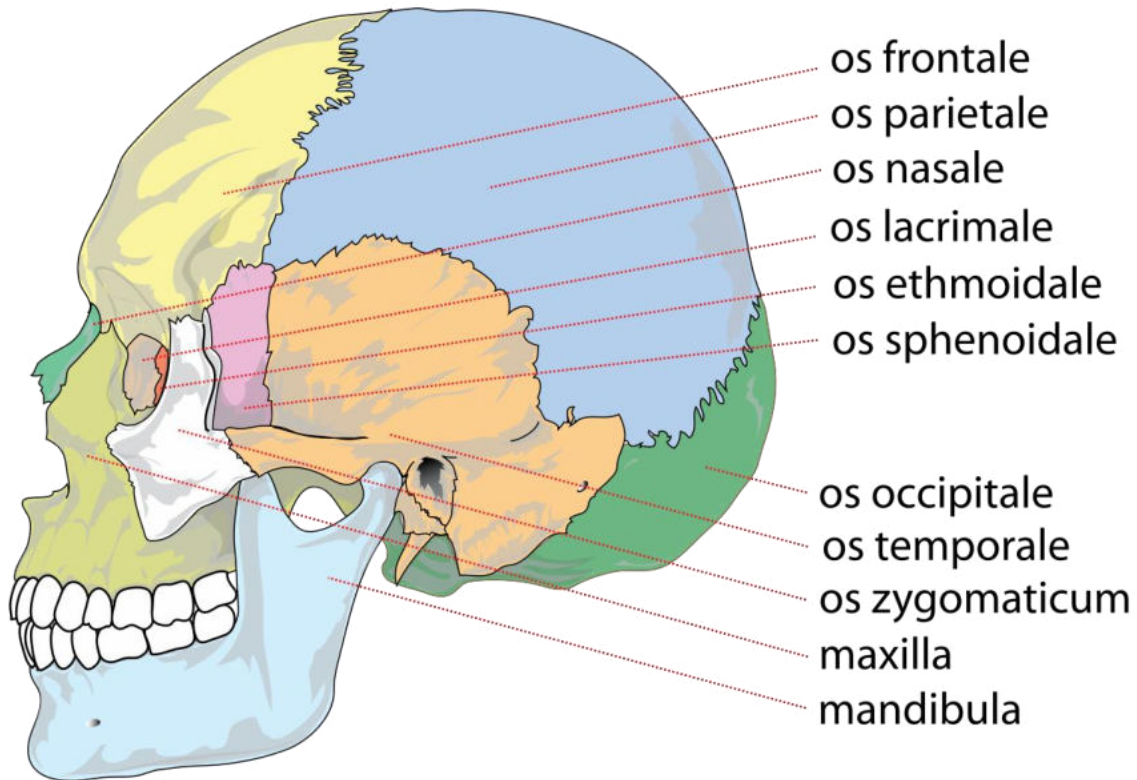


CRANIUM (lebka)



neurocranium - mozgová časť
splanchnocranium - tvárová časť



NEUROCRANIUM

Os occipitale (záhlavná kost')

squama occipitalis
partes laterales
pars basilaris

foramen magnum

sutura lambdoidea
sutura occipitomastoidea

-squama occipitalis

lamina externa - protuberantia occipitalis externa

crista occipitalis externa

planum nuchale

linea nuchalis suprema, superior, inferior

lamina interna - protuberantia occipitalis interna

eminentia cruciformis

sulcus sinus transversi

sulcus sinus sagittalis superioris

ossa Wormiana

-partes laterales

condylus occipitalis

canalis nervi hypoglossi

incisura jugularis

foramen jugulare

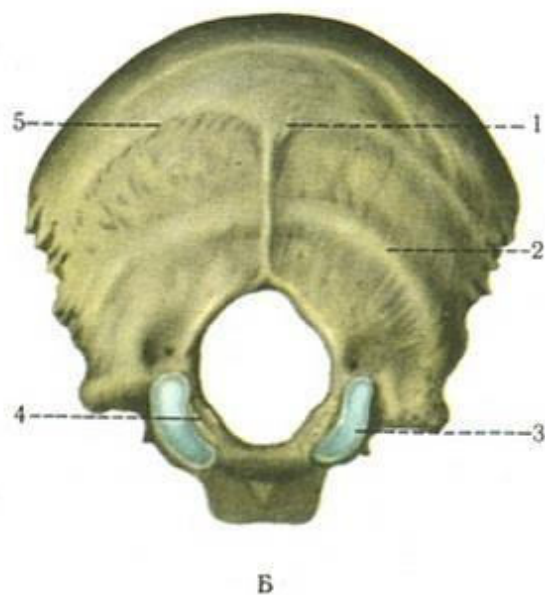
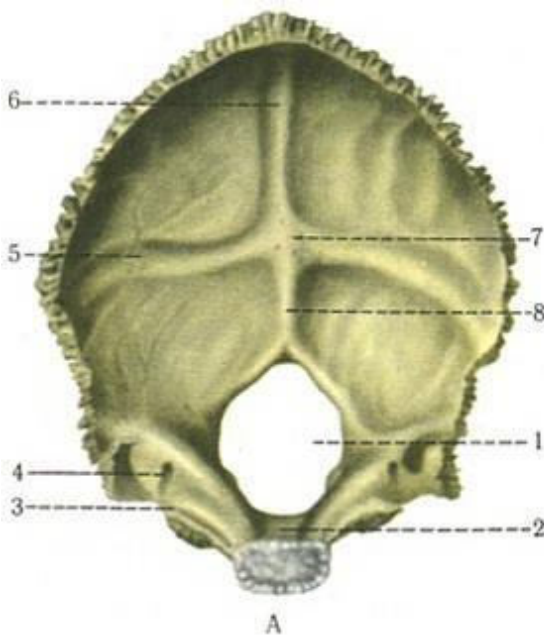
-pars basilaris

synchondrosis sphenoccipitalis

synostosis sphenoccipitalis

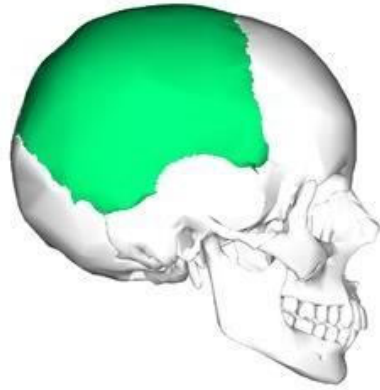
18. – 22. r.

antropometrické body: lambda, inion, opisthocranium, opisthion, basion



Os parietale (temenná kost')

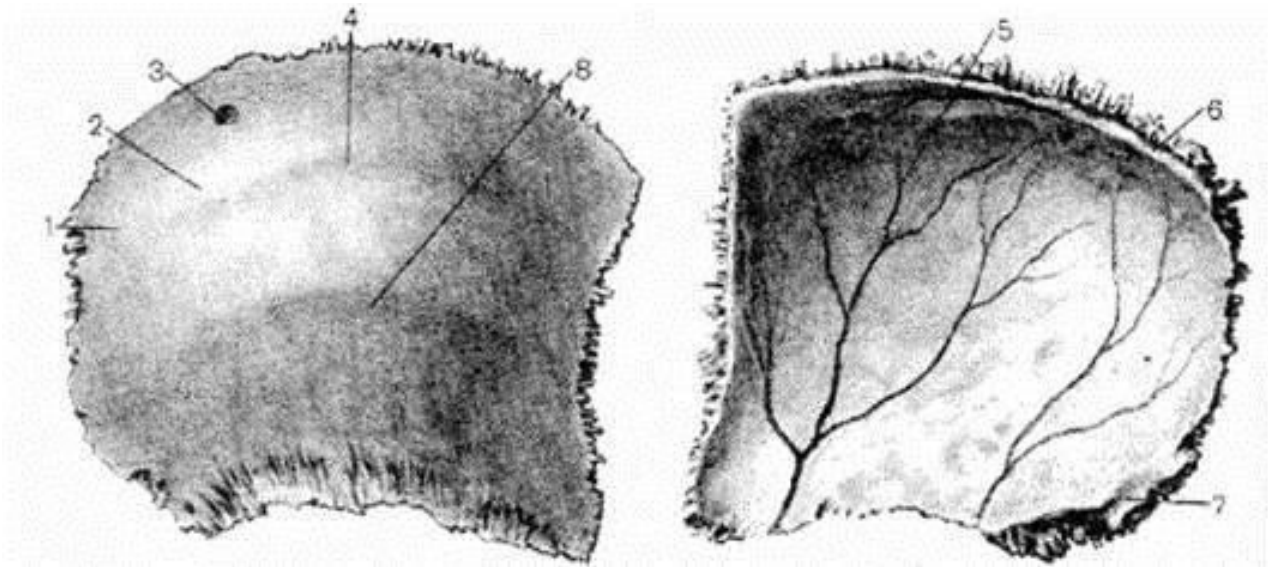
- 5 suturae serratae
- 1 sutura squamosa
- s. coronalis
- s. sagittalis
- s. lambdoidea
- s. sphenoparietalis
- s. parietomastoidea
- s. squamosa



fonticulus anterior et posterior
fonticulus sphenoidalis, fonticulus mastoideus

linea temporalis
tuber parietale
foramen parietale - emissarium (spojka žilového splavu s povrchovými žilami)

antropometrické body: bregma, euryon



Os frontale (čelová kost')

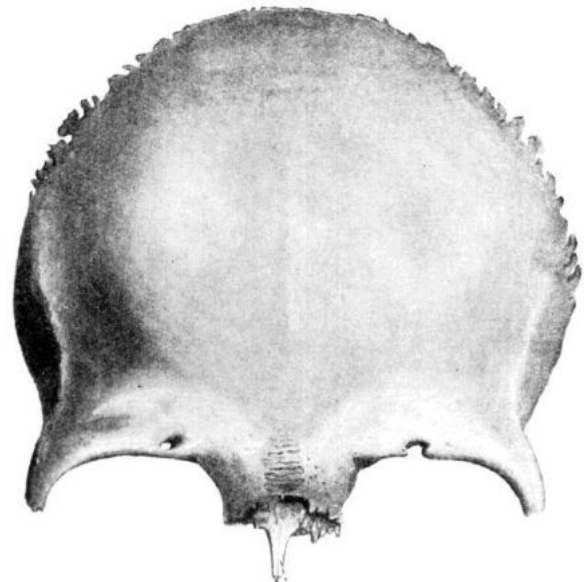
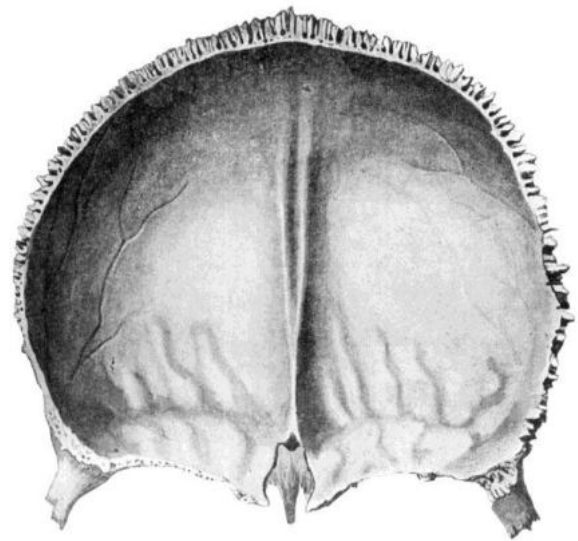
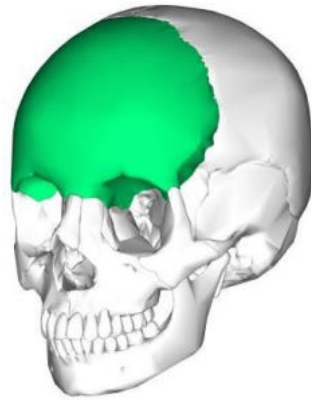
squama frontalis
partes orbitales
pars nasalis

sutura frontalis
sutura frontalis persistens – metopizmus
sutura frontozygomatica
sutura nasofrontalis
sutura frontomaxillaris
sutura frontolacrimalis
sutura frontoethmoidalis
sutura sphenofrontalis

-squama frontalis
tubera frontalia
margo supraorbitalis
arcus superciliaris
glabella
sinus frontalis
processus zygomaticus
facies interna - sulcus sinus sagittalis superioris
 crista frontalis (dura mater)
 foramen caecum
-partes orbitales (2 horizontálne platne)
fossa glandulae lacrimalis
incisura ethmoidalis

-pars nasalis
spina nasalis

antropometrické body: bregma, glabella, nasion



Os sphenoidale (klinová kost')

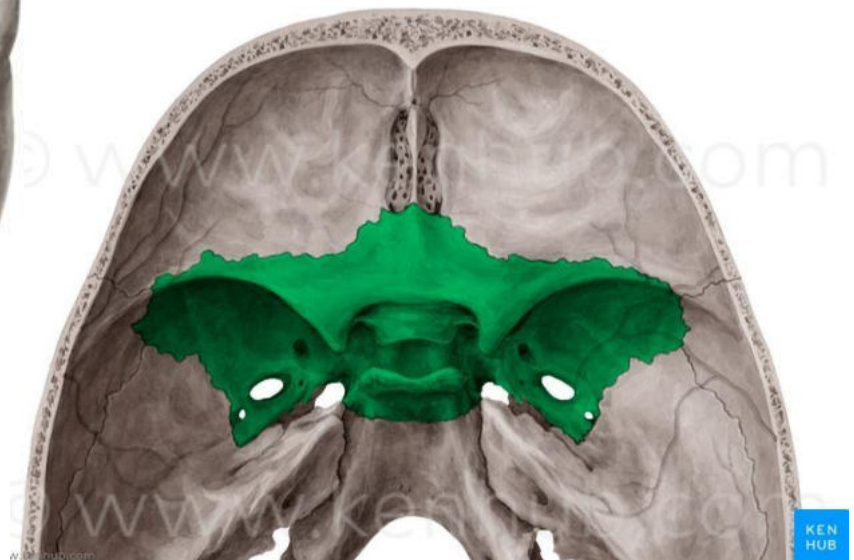
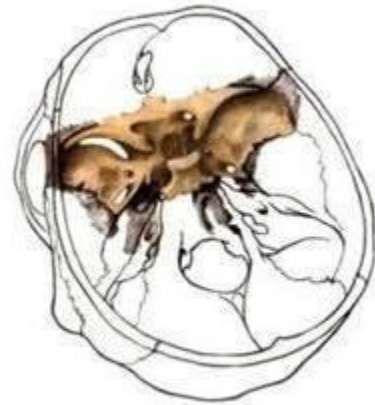
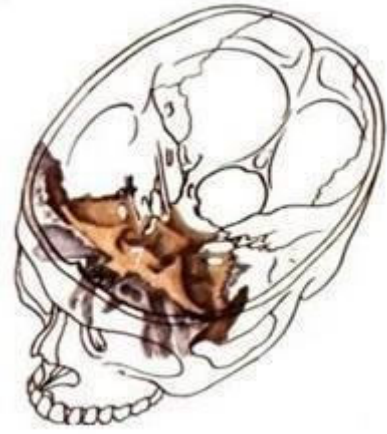
corpus ossis sphenoidalis
alae minores
alae majores
processus pterygoidei

-corpus ossis sphenoidalis
sinus sphenoidalis
sella turcica
fossa hypophysialis
tuberculum sellae
sulcus praechiasmaticus
chiasma opticum
dorsum sellae
sulcus caroticus
rostrum sphenoidale

-alae minores
canalis opticus
fissura orbitalis superior

-alae majores
foramen rotundum
foramen ovale

-processus pterygoidei



Os temporale (spánková kost')

pars squamosa
pars petrosa
pars tympanica

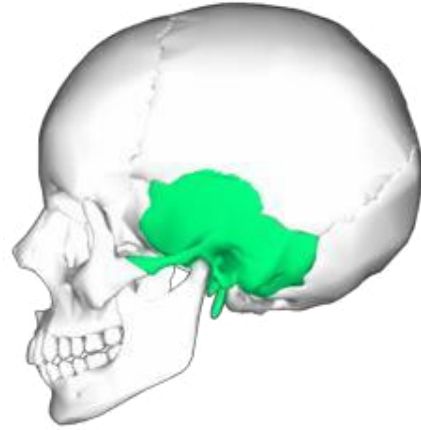
sutura zygomaticotemporalis
sutura sphenosquamosa

-pars squamosa
processus zygomaticus
arcus zygomaticus
fossa mandibularis
tuberculum articulare
linea temporalis

-pars petrosa
→processu mastoideus (úpon m. sternocleidomastoideus)
cellulae mastoideae
antrum mastoideum
→pyramis
porus acusticus internus
canalis caroticus

processus styloideus
foramen stylomastoideum

-pars tympanica
anulus tympanicus
porus acusticus externus



Cavum cranii (lebečná dutina)

-kapacita mozgovne 1450 cm³

SPLANCHNOCRANIUM

Os ethmoidale (čuchová kosť)

lamina perpendicularis – septum nasi

horizontálna platňa – lamina cribrosa (riečicovitá platňa)

crista galli (dura mater)

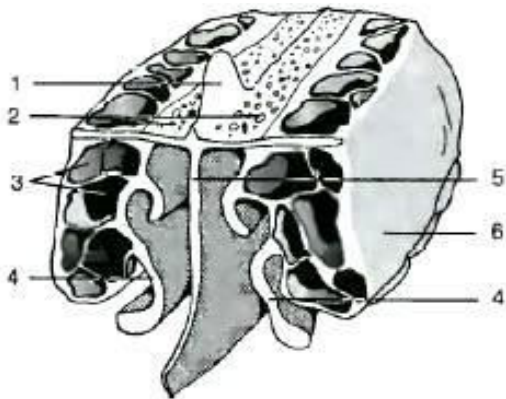
-labyrinthus ethmoidalis (párový útvar)

cellulae ethmoidales

lamina orbitalis (lamina papyracea)

concha nasalis superior

concha nasalis media



Concha nasalis inferior (dolná nosová mušľa)

pripája sa na čeľusť a podnebnú kosť

Os nasale (nosová kosť)

sutura frontonasalis

sutura internasalis

sutura nasomaxillaris

apertura piriformis

Os lacrimale (slzná kosť)

sutura frontolacrimalis

sutura lacrimomaxillaris

crista lacrimalis

sulcus lacrimalis

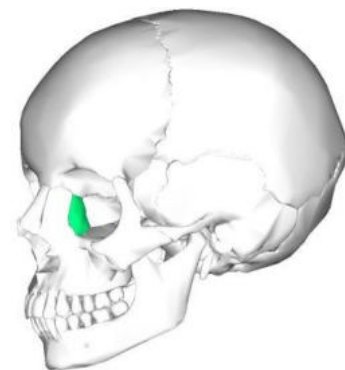
fossa sacci lacrimalis

Vomer (čerieslo)

dopĺňa zadnú a dolnú časť nosovej priehradky

alae vomeris

choanae



Maxilla (čelúst')

corpus maxillae
processus frontalis
processus alveolaris
processus palatinus
processus zygomaticus

-corpus maxillae
fossa canina
foramen infraorbitale
incisura nasalis
apertura piriformis
spina nasalis anterior
sinus maxillaris

-processus frontalis
-processus zygomaticus
-processus alveolaris
alveoli dentales

-processus palatinus
foramen incisivum
os incisivum (intermaxilla)
sutura palatina mediana
sutura palatina transversa

Os palatinum (podnebná kost')

palatum osseum
lamina horizontalis
lamina perpendicularis
spina nasalis posterior
sutura palatina media

Os zygomaticum (jarmová kost')

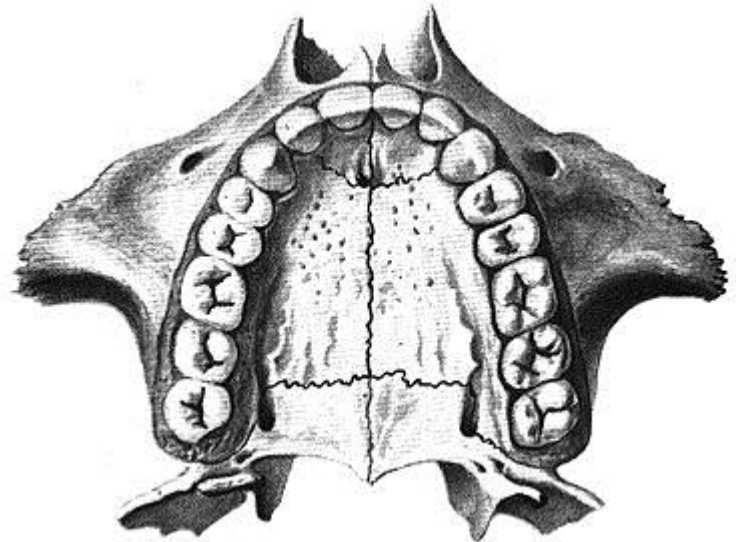
facies lateralis
facies orbitalis
facies temporalis

processus frontalis
processus temporalis

sutura frontozygomatica
sutura sphenozygomatica
sutura zygomaticotemporalis

arcus zygomaticus

antropometrický bod: zygion



Mandibula (sánka)

corpus mandibulae
ramus mandibulae
angulus mandibulae

-corpus mandibulae
protuberantia mentalis
tuberculum mentale
linea obliqua
foramen mentale
canalis mandibulae
foramen mandibulae

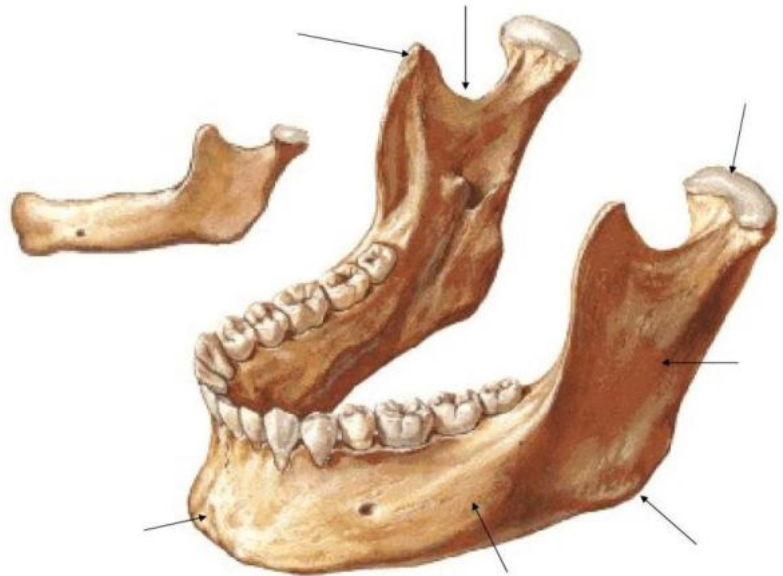
pars alveolaris
alveoli dentales

linea mylohyoidea
fovea sublingualis
spina mentalis

-ramus mandibulae
processus coronoideus
processus condylaris
caput mandibulae
collum mandibulae
incisura mandibulae

-angulus mandibulae
tuberositas pterygoidea
tuberositas masseterica

antropometrický bod: gonion



Os hyoideum (jazylka)

corpus
cornu minor
cornu major

